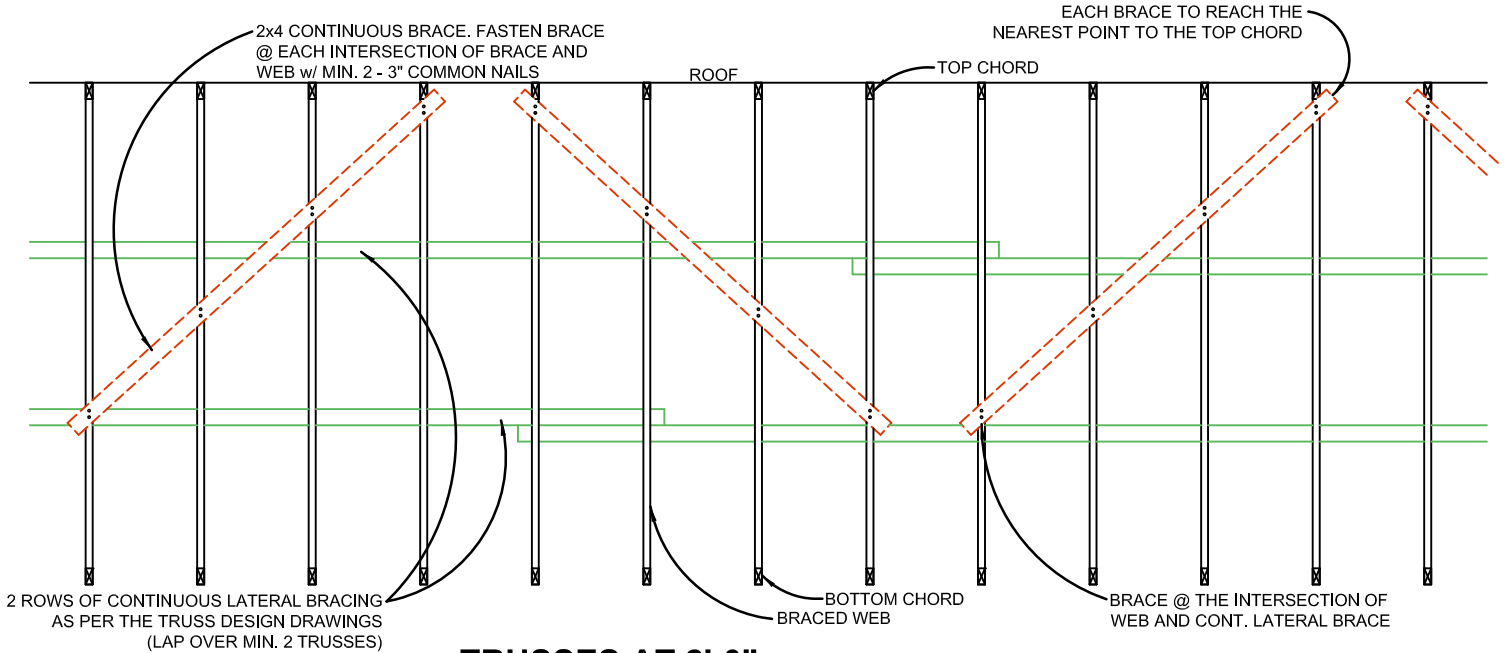


WESTERN WOOD  
TRUSS ASSOCIATION  
OF BRITISH COLUMBIA

3187 CAULFIELD RIDGE COQUITLAM BC V3E 3P7 TEL (604) 944-6632 WWW.WWTABC.COM INFO@WWTABC.COM

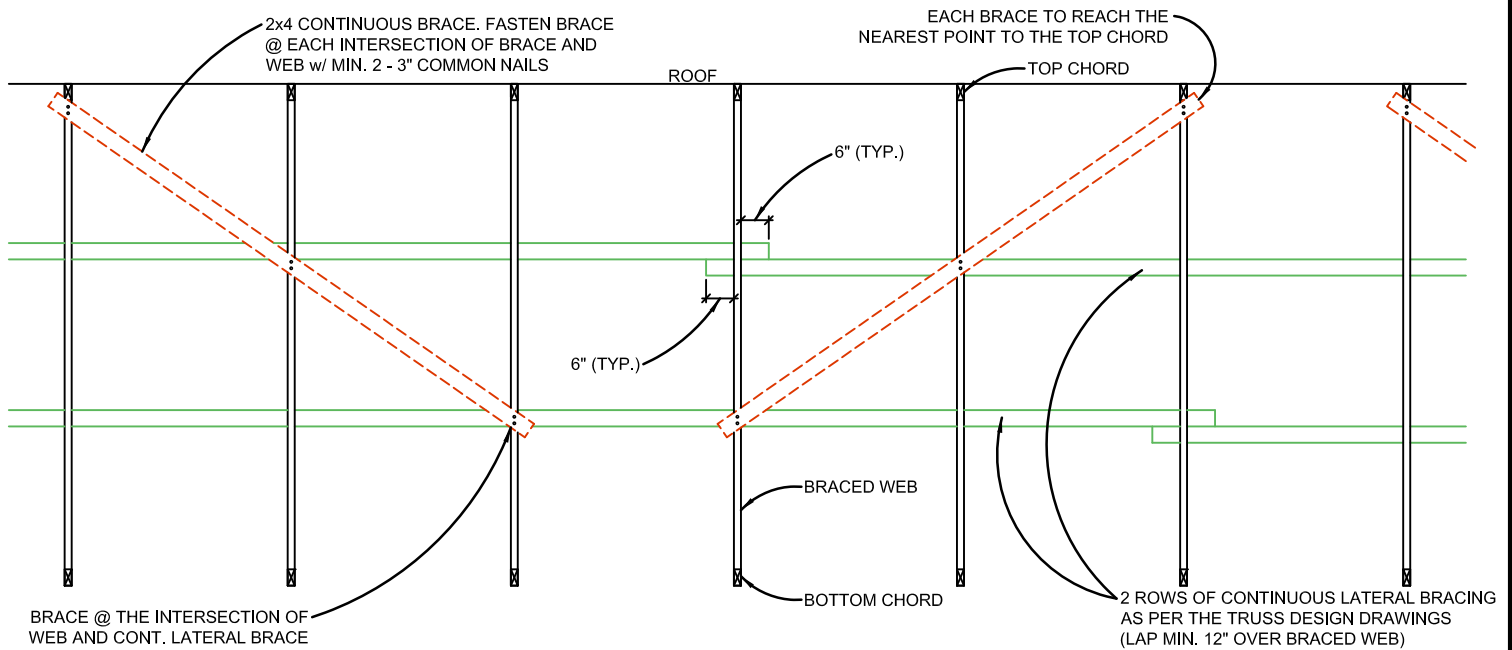
TECHNICAL GUIDELINE:

## ANCHORING DOUBLE CONTINUOUS WEB BRACING DETAIL



### TRUSSES AT 2'-0" o.c.

NOTE: EACH BRACE TO CROSS OVER 4 TRUSSES (AT APPROX. 45°)



### TRUSSES AT 4'-0" o.c.

NOTE: EACH BRACE TO CROSS OVER 3 TRUSSES (AT APPROX. 45°)

THIS INFORMATION IS INTENDED TO ILLUSTRATE CERTAIN OPTIONS FOR RESISTING ACCUMULATED WEB BUCKLING FORCES IN PITCHED AND PARALLEL CHORD TRUSSES. IT IS INTENDED TO PROVIDE TYPICAL CONFIGURATIONS ONLY. THESE CONFIGURATIONS ARE DEEMED TO BE RELATIVELY CONSERVATIVE, HOWEVER WILL NOT COVER ALL CASES. QUALIFIED PERSONS MUST ENSURE SPECIFIC APPLICATIONS WILL RESIST IMPOSED LOADS.